

# YOUR SUPPORT, YOUR IMPACT

REPORT TO THE COMMUNITY 2015 - 2016

 **Royal Alexandra**  
HOSPITAL FOUNDATION







# TABLE OF CONTENTS

<b>Page 4</b>	Your Support, Your Impact	<b>Page 22</b>	Technology Makes the Difference
<b>Page 6</b>	WCHRI: Planning for the Future	<b>Page 24</b>	Full House Lottery: Funding Better Healthcare
<b>Page 8</b>	No Footprint too Small	<b>Page 26</b>	ARCH: A Ground Breaking Program Yields Incredible Results
<b>Page 10</b>	Shoppers Drug Mart Taking Strides	<b>Page 28</b>	Amazing at the Alex
<b>Page 12</b>	A Touchdown for Women's Health	<b>Page 30</b>	The Difference Between Care and Caring
<b>Page 14</b>	Harvest Celebration	<b>Page 32</b>	President and Chair's Message
<b>Page 16</b>	Five Years of Healing Hearts	<b>Page 34</b>	Board of Directors
<b>Page 18</b>	Hitting A Bullseye for Cardiac Care	<b>Page 36</b>	Financial Information
<b>Page 20</b>	Keeping Patient Care in Focus	<b>Page 42</b>	Mission Statements



## OUR VISION

Improving the health of Albertans by building passionate community support for the Royal Alexandra Hospital.

## OUR MISSION

The Royal Alexandra Hospital Foundation inspires community support for the Royal Alexandra Hospital and its medical centres of excellence, including the Lois Hole Hospital for Women, the CK Hui Heart Centre, the Eye Institute of Alberta and the Orthopedic Surgery Centre.

## OUR VALUES

### We believe in the value of Integrity.

Therefore doing the right thing in the right way is the norm, not the exception. This means the little things, when no one is watching, and the big things, when no one can look away.

### We believe in the value of Respect.

Therefore, we give it freely and equally to all people with whom our organization touches.

### We believe in the value of Strong Relationships.

As such, we are always transparent about our goals and objectives when working with others.

### We believe in the value of Stewardship.

Therefore we say *thank you* often, and in many ways. We know that donors could choose to support any charity - but they've chosen this hospital, and they should feel good about doing so.



The Royal Alexandra Hospital Foundation is pleased to acknowledge the generous assistance of the following businesses in making this year's Report to the Community possible:





# YOUR SUPPORT, YOUR IMPACT

Thanks to generous community support, the Royal Alexandra Hospital Foundation funds cutting-edge technologies, crucial medical research, advanced education, and facility enhancements that feed the heart and soul of the Royal Alex. Donor contributions have touched every corner of our hospital; we have said it before and we will say it again, community support builds great hospitals.

In this publication you'll read some impressive figures, but those numbers aren't just mere digits – they represent people. From the tiniest premature babies to the wisest grandparents, everyday lives are transformed and saved thanks to the Royal Alexandra Hospital and its centres of excellence.

## THE ROYAL ALEXANDRA HOSPITAL AT A GLANCE

**15**  
BUILDINGS



**32,448**  
ANNUAL SURGERIES



**26.5**  
ACRES OF LAND



**73,590**  
ANNUAL EMERGENCY VISITS



**870**  
BEDS



**366,465**  
ANNUAL OUTPATIENT VISITS



**6,809**  
STAFF MEMBERS



Royal Alexandra Hospital Foundation Net Revenue 2006 – 2016:

**\$36,726,987**

*\*Figures based on data from April 1, 2015 to March 31, 2016.*





◀ (Left to Right): Donna Dawson (WCHRI Research Nurse Coordinator), Dr. Sandra Davidge (Director, WCHRI), Dr. Jane Schulz (Urogynecologist), and Dr. Sue Ross (Cavarzan Chair in Mature Women's Health Research & Innovation) look over blueprints for the new WCHRI space at the Lois Hole Hospital for Women.

## Research Today is Healthcare Tomorrow

It is the vision of the Royal Alexandra Hospital Foundation to create the very best women's hospital in Canada at the Lois Hole Hospital for Women, and the partnership that has been established with the Women and Children's Health Research Institute (WCHRI) is critical to this vision.

The next step in this important partnership is now underway at the Lois Hole Hospital for Women: a dedicated space devoted to clinical studies. This important research space will provide the WCHRI team the ability to facilitate research in women's health without impacting the daily clinical care requirements of the hospital. It will also allow clinicians to easily participate and further their clinical research programs which contribute to improving patient care and enhancing the knowledge of all care providers.

Research today means improved health practices tomorrow. Research today also addresses the glaring disparities that have

existed for generations, in the treatment protocols for women. Donor support ten years ago provided an initial investment of \$11 million to WCHRI, which resulted in the awarding of 175 research grants and the creation of three Endowed Research Chairs making significant inroads in the areas of ovarian cancer, perinatal health, and mature women's health.

Ten years later, continued donor support of WCHRI continues and has paved the way for an additional \$14.5 million dollars and the establishment of a fourth endowed chair: The Lois Hole Hospital for Women Cross-Provincial Chair in Perinatal Mental Health. This renewed funding is a resounding commitment to WCHRI by the Royal Alexandra Hospital Foundation from 2016 to 2025.

Thank you to our donors for helping to drive forward a healthier future for women of all ages and in all stages of life.

## women & children's health research institute

From 2016-2025 the Royal Alexandra Hospital Foundation in support of the Lois Hole Hospital for Women will be contributing \$14.5 million to women's health and perinatal research through the Women and Children's Health Research Institute (WCHRI). This announcement marks the second ten-year commitment and totals more than \$25 million donated to promote research excellence in women's health.

### WHY WOMEN'S RESEARCH?

Women have been **under-represented** in health studies, including in clinical trials

**Prevalence, causes, experience** and symptoms of many illnesses and chronic conditions are **different** for women

Women **respond differently** to medications and other types of treatments

Perinatal research increases our **understanding of the early origins** of many chronic diseases and developmental problems

Research improves **healthcare**

### WHY IS RESEARCH VITAL TO THE HOSPITAL

As a research-integrated hospital the LHHW offers women the latest advances in medical knowledge and care

Research conducted at the LHHW has established the hospital as a national leader

### WOMEN'S RESEARCH FOCUS

- Perinatal and high-risk obstetrics
- Menopausal and post-menopausal conditions
- Breast and ovarian cancers
- Women's mental health



### WCHRI QUICK FACTS

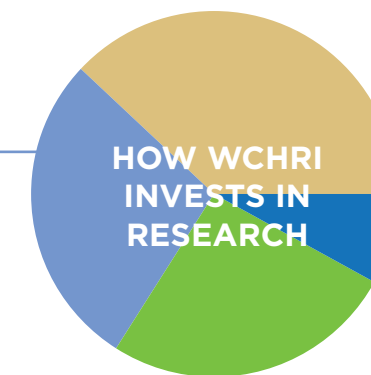
Partnership of the University of Alberta and Alberta Health Services with funding from the Royal Alexandra Hospital Foundation and the Stollery Children's Hospital Foundation

FROM 2006-2016

- 450 Researchers
- 900 Research grants
- 560 Student/trainee awards
- 550 Clinical research projects

### \$ 2014-2015 SUPPORT

- 11 **Innovation and clinical seed grants** that provide immediately relevant, or rapidly translatable, research to improve women's health
- 13 Trainee and student **awards**
- 28 Research **projects**
- 3 **Academic chairs** at the Lois Hole Hospital for Women supporting research in ovarian cancer, mature women's health and obstetrics and gynecology
- 3 **Recruitment and retention awards** which attract and retain top-notch researchers to the hospital and the city of Edmonton







## No Footprint Too Small

When Kellie Willie became pregnant, like every expecting mother, she was filled with anticipation and excitement for what the future had in store. First movements of her baby on the inside, first cries of her baby on the outside, first steps, first teeth, first words; the list goes on. Kellie, like so many other expecting moms, was never able to realize these firsts.

As a nurse on the Labour and Delivery floor for the past four years at the Lois Hole Hospital for Women Kellie has been the source of hope and healing, great expectations and, yes, sometimes part of the support network when a pregnancy is lost.

At 12 weeks of pregnancy Kellie and her husband experienced their own loss. Kellie was then referred to the Early Pregnancy Loss Program at the hospital.

Since their loss Kellie and her husband have healed and welcomed a baby girl

to their family. Brooke is now a busy toddler who keeps Kellie on her toes. Kellie has also discovered her passion in life through helping others with their health and fitness journey. Kellie is the founder of Fit Your Life, a business that offers fitness classes to women at very special times in their lives.

In the fall of 2015 Kellie used this new blossoming business venture to raise awareness and funds for the Perinatal Bereavement program at the hospital when “Sweat for a Cause” was born. Once the plan was made online sharing of the event spread like wildfire and the four, one-hour bootcamp drop-ins raised \$700 for the cause, proving no contribution is too small to make a difference in an area of need at the hospital.



### — PREGNANCY FACTS —



For women who already know they are **pregnant** **1 in 6 pregnancies** ends in a loss  
*National Institute of Child Health and Human Development (2010)*

On average **more than 630 women** are helped with our **Early Pregnancy Loss Program** (and even more losses happen each year at the hospital that families work through themselves)



On average women **wait 1.5 months to be seen** by one of our Reproductive Mental Health team members. This is far too long, **donor support** can mean a reduction in wait times for those **who need care immediately.**



On average **more than 1,700 women** are helped through the **reproductive mental health program** at the hospital.

*“ The services offered by this program are **incomparable** and have touched me on both a personal and professional level. The support we received was **absolutely amazing**. The program staff knew exactly what we needed even when we didn’t know ourselves. ”*

– Kellie Willie







## Shoppers Drug Mart Making Strides into Changing the Face of Reproductive Mental Health

For one weekend in May each year, Edmonton's Sir Wilfrid Laurier Park becomes a sea of purple. Moms, dads, grandmas and grandpas, brothers, sisters, and even pets come together to "run it out, walk it out and talk it out" raising money for the Reproductive Mental Health program at the Lois Hole Hospital for Women. This year's race alone brought in \$120,000 for the hospital - not bad for a group of people having so much fun!

The Reproductive Mental Health Program is integrated directly into the specialized women's health clinics at the Lois Hole Hospital for Women. Funds from Run for Women help to enhance the care that is provided to women suffering from postpartum depression and other reproductive mental health issues (such as those related to menopause), providing integrated and consolidated care that truly makes a difference.

Race funds throughout the years have also provided funding for a ground-breaking pilot study in perinatal mental health at the Lois Hole Hospital for Women. The study is the first of its kind and includes online prenatal screening and a therapy component for mental health support during a woman's perinatal period. This research is led by Dr. Dawn Kingston.

Dr. Kingston's work has now taken on a new commitment with the announcement of The Lois Hole Hospital for Women Cross-Provincial Chair in Perinatal Mental Health. As a partnership between the Royal Alexandra Hospital Foundation and the University of Calgary this chair is the first of its kind in our province: an achievement of which the hospital is incredibly proud, and one that may not have happened without the foresight and financial support offered by Shoppers Drug Mart.

Thank you Shoppers Drug Mart for your continued commitment to research and innovation in support of women's mental health. Your organization is truly making a difference.

### SHOPPERS DRUG MART CONTRIBUTIONS THROUGHOUT THE YEARS

*the dollar figures represent more than just the funds raised at the R4W*

Number of **Shoppers' employees** that have run each year



Number of total participants in the race each year in Edmonton



Total donations made by Shoppers Life Foundation



**GRAND TOTAL OF \$929,141**



**BREAKING THE SILENCE**



Estimated that **2,800 Canadian women** will be newly diagnosed with Ovarian Cancer, dubbed the "silent killer".\*

**More than 1,750** women died from ovarian cancer in the **last year**.



Ovarian cancer is the **5th** most common cancer for **women\*** and is considered the **most serious**.\*



**Total funds** raised since inception of the dinner – over **\$457,000**, 2015 raised over **\$59,000**.



The Eskimos Endowment Fund supports a team of **12 researchers** all working toward earlier and more reliable detection methods for **ovarian cancer**.

\*source: Canadian Cancer Statistics, 2015

**Scoring a Touchdown for Women's Health**

Ten years ago, the Edmonton Eskimos team lost someone incredibly special to their organization when Pam Monastyrskij, an employee of 21 years, lost her battle with ovarian cancer. Pam was known by everyone in the Eskimos back office. More than just a co-worker to many, Pam was a friend. Pam was someone who brought everyone together for both work and social events. The loss of their friend and coworker hit the Eskimos staff very hard.

After the loss of such an important member of their team the Eskimos made plans to make a difference in Pam's honour. In 2008, the Edmonton Eskimos Women's Ovarian Cancer Research Endowment Fund at the Lois Hole Hospital for Women was established and an annual fundraiser was created; the Edmonton Eskimos Women's Dinner.

"We think Pam would be very proud of the Edmonton Eskimos Women's Dinner," said Cathy Presniak, Vice President, Finance and Human

Resources with the Eskimos and long-time friend of Pam's. "The event and the endowment fund created in her honour is a wonderful tribute to our friend."

2016 marked the eighth annual Eskimos Women's Dinner and once again the event was a sell-out! Those in attendance each year are thrilled to support the fight against ovarian cancer by contributing their funds to research that is working toward identifying earlier detection markers of the disease – a discovery that would save the lives of so many.

The Eskimos Endowment Fund is directed to Dr. Lynne Postovit, Associate Professor and leading researcher in women's cancers at the University of Alberta and the Lois Hole Hospital for Women. Dr. Postovit and her team of researchers work tirelessly in their quest to find methods that will allow for earlier detection of this incredibly aggressive disease; earlier detection that could mean hundreds if not thousands of lives saved.

*"Ovarian cancer is an extremely difficult disease to detect early enough to make a difference for most of those affected. Sadly, Pam Monastyrskij was one of those women. Today my team is **fighting to change the outcome for those affected by ovarian cancer in the future.**"*

- Dr. Lynne Postovit



▲ Pam Monastyrskij

▶ Dr. Lynne Postovit, Sawin-Baldwin Chair in Ovarian Cancer, is the quarterback of her research lab at the University of Alberta.







**Celebrate Hope, Celebrate Healing, Celebrate the Harvest!**



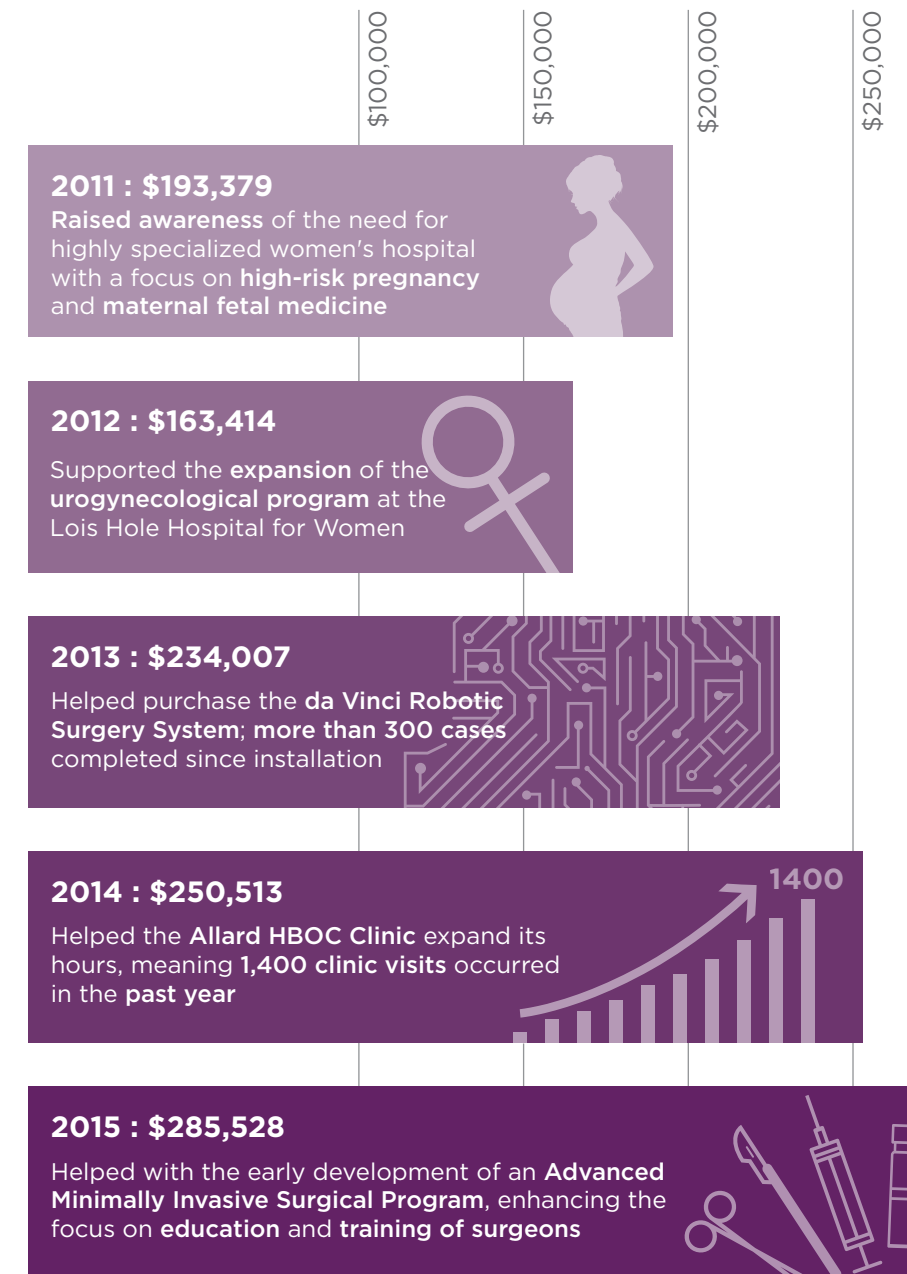
*“The most exhilarating black-tie event I have attended in decades.”*

– Nick Lees, Edmonton Journal



**FUNDS RAISED AT HARVEST AT A GLANCE**

*\* Includes funds from ticket and table sales only (not donations)*



The Harvest Celebration was created by the Royal Alexandra Hospital Foundation to celebrate and inspire support for Alberta's only dedicated women's hospital, the Lois Hole Hospital for Women. It remains the only major fundraising event in Edmonton to support the local food movement, profiling the bounty of local harvest, slow-cooked and savoured with the company of good friends for a great cause.

Each year the event is created and executed by a committee comprised of Foundation staff and volunteers and serves to highlight an area of need at the Lois Hole Hospital for Women.

In the early months of 2016 the first-ever Edmonton Event Awards were held to celebrate leadership and excellence in the event planning industry and the evening was a night to remember for the team at the Royal Alexandra Hospital Foundation. The Edmonton Event Award's Committee selected the foundation's signature event as Best Fundraiser for 2015; the crown jewel on an already extremely successful event for the Royal Alex team.

*“ Working with our valued vendors and volunteers, our Royal Alexandra Hospital Foundation team has created the finest event in our history, one which we can proudly call the best in the city. ”*

– Andrew Otway

President & CEO, Royal Alexandra Hospital Foundation

Each year Harvest Celebration opens a new chapter in the continued development of the Lois Hole Hospital for Women as an epicenter for women's health excellence in Alberta and Western Canada.



► Dr. Randall Williams (Chief of Cardiology, Royal Alexandra Hospital) and Dr. Ben Tyrrell inside the CK Hui Heart Centre's busy Cardiac Care Unit.



## Five Years of Healing Hearts

When the CK Hui Heart Centre opened in May 2011, it marked a new era in cardiac care at the Royal Alexandra Hospital. A desire to aim higher and go further has guided the cardiology team at the Royal Alex for decades, and the consolidation of all cardiac care under one roof provided the team with a renewed energy and focus on patient care, teaching, and innovation.

Two factors allow the CK Hui Heart Centre to successfully stay on the forefront of cardiac medicine. The first is a team of doctors, nurses, technicians, and other healthcare professionals who are dedicated to improving the patient experience and delivering the highest level of cardiac care. The second is access to the latest

medical technologies and research, both of which have been possible because of generous community support.

In five short years, the CK Hui Heart Centre has reaffirmed its position as a leader in cardiac innovation and technique in western Canada, and has earned a growing international reputation as a centre for training and education. The CK Hui team is inspired by donor support to continue building its legacy of excellence in care and to further advance the science of cardiology.

As one generation of cardiologists passes the torch to the next, community support will continue to be the backbone of this world class centre in cardiac care.

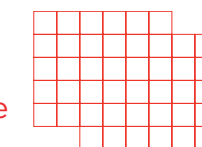
*“ A **spirit of innovation** has guided what we do for many years. We do our best to **think outside of the box**, but what's most important to our patients is very simple: **giving them the best care possible.** ”*

- Dr. Randall Williams, Chief of Cardiology



**6,084,623**

Donations to the CK Hui Heart Centre (2011 - 2016)



**60,000** square feet  
size of the CK Hui Heart Centre's consolidated cardiac care



**45%** CK Hui Heart Centre patients from outside of Edmonton, from Red Deer to Nunavut, NWT, Yukon and Northern BC.



## Hitting a Bullseye for Cardiac Care



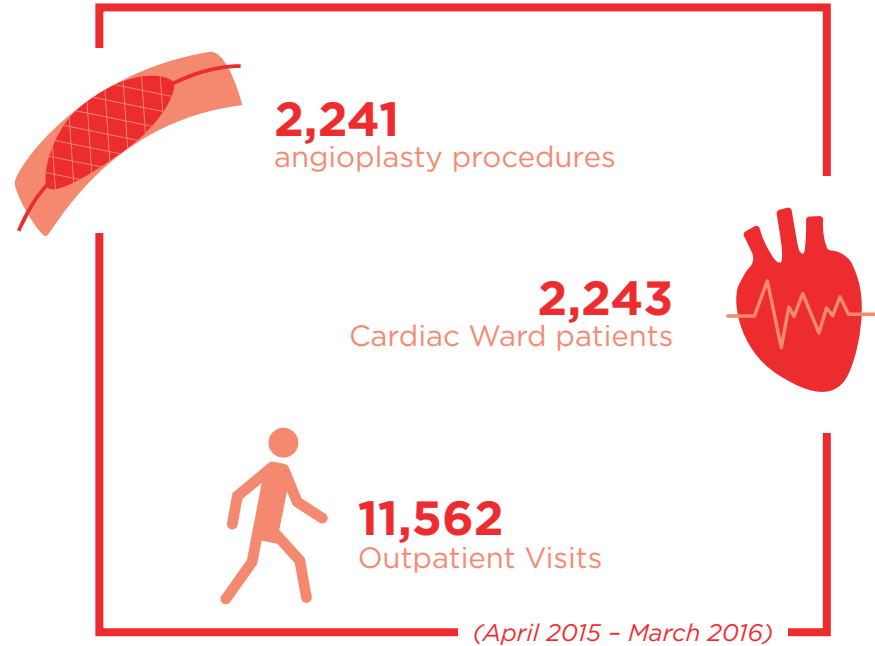
Leading edge medical technology like the CrossBoss and Stingray catheter systems that cleared a life-threatening blockage in Pete Ward's heart is made possible by generous community support.

The CrossBoss catheter is more or less like a traditional catheter, but has a blunt tip at the end of a grooved metal cord, resembling a miniature plumber's snake. The CrossBoss can push through a heart blockage if it is still relatively soft. However, if the blockage is hard, the CrossBoss can be ingeniously directed around

the blockage by moving into the second layer of the artery. (Arteries have three layers: the main channel, a second layer, and a third outer layer). After clearing a path through the second artery layer with the CrossBoss, the Stingray is then used to re-enter the inner layer of the artery. Cardiologists can then build a new pathway around the blockage to restore healthy blood flow.

"To think that they can stick a wire in your leg and operate on a beating heart," says Pete with a chuckle. "And with almost no discomfort – I've had much worse at the dentist!"

Amazing technology combined with expert patient care at the CK Hui Heart Centre means better results and less downtime for patients. In Pete's case, it quickly allowed him to get back to his regular life, like spending time in the woods with his long bow.



*“ When I needed it, **cutting-edge technology** was available at the CK Hui Heart Centre to help clear a very stubborn blockage in my heart.*

*I want to **thank the donors** who have supported the CK Hui Heart Centre over the past five years and made this possible. ”*

- Pete Ward

◀ Pete Ward, an accomplished archer, enjoys some weekend target practice.







*“ The Eye Institute of Alberta is northern Alberta’s hub for all things ophthalmology related. Strengthen that hub, and you **strengthen care** all over the province. ”*

- Dr. Karim Damji,  
Chief of Ophthalmology,  
Royal Alexandra Hospital

◀ Haily Nguyen (Patient Care Manager, Eye Institute of Alberta), Dr. Karim Damji (Chief of Ophthalmology), Karen Harris (Manager, Eye Institute of Alberta).

## Keeping Patient Care in Focus

Since 1996, the Eye Institute of Alberta at the Royal Alexandra Hospital has been delivering expert and compassionate eye care to patients. Originally designed to treat 12,000 patients a year, the clinic now sees more than 45,000 patients annually. Despite this exceptional volume, the staff of the Eye Institute of Alberta continues to provide excellent patient care to each and every patient. Improvements to the physical space at this exceptionally busy clinic in the near future will ensure that patients and staff have a more welcoming and holistic space for treatment.

The Royal Alexandra Hospital Foundation is dedicated to raising \$4 million to help the Eye Institute of Alberta to continue providing the very best in vision and eye care.

▶ A friendlier and more efficient use of the physical space at the Eye Institute of Alberta in the future will ensure that patients have a better experience.



## Eye Institute of Alberta CAMPAIGN



**\$4 million**  
Campaign



**\$1 million**  
Ophthalmic Surgical  
Skills Centre



**\$2.3 million**  
Patient Experience  
Improvements



**\$700,000**  
Research and Innovation



## Technology Makes the Difference

In a busy environment like the Eye Institute of Alberta, modern equipment not only saves time but provides better information and leads to better outcomes for patients. Whether it's an updated version of a tried and true diagnostic tool like a slit lamp, or a more high-tech ophthalmic ultrasound unit, patients notice the difference when their eye exams are more comfortable and efficient.

The ophthalmic ultrasound unit (nicknamed "Eugene" by Eye Institute staff) was made possible by generous support from Lions Clubs of Alberta. Ultrasound technology produces high-quality images for doctors to assess the front and back part of the eye, areas where a slit lamp cannot gain access. Eugene has all of the best ultrasound probes required to perform a full ultrasound examination on the eye, enhancing the Eye Institute team's ability to measure the length of the eye accurately, evaluate for suspicious conditions, and assess tissue for possible cancer.

Thanks to the Lions Clubs of Alberta, patient care is improved every day at the Eye Institute of Alberta.

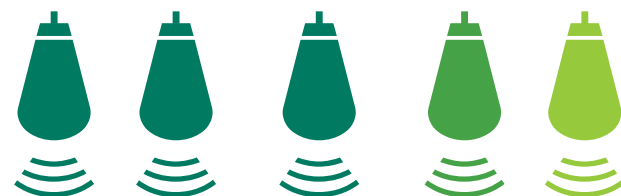
*“ There’s so much about healthcare that relies on **technology**. We’re thrilled that community support allows the Eye Institute of Alberta to have the equipment we need to provide the **best possible care** to our patients. ”*

- Donna Bong, Clinical Ophthalmic Educator,  
Eye Institute of Alberta

► Crystal Krentz (Certified Ophthalmic Technician) and Donna Bong (Clinical Ophthalmic Educator) with some of the equipment purchased through donor support for the Eye Institute of Alberta.



**95% - patients**  
who are examined with a **slit lamp**



**5-10 patients a week**  
patients a week examined with ultrasound  
equipment for non-oncology eye disease



**60 patients a month**  
examined with ultrasound equipment for  
oncology (detection of cancer or moles)

(2014 - 2015)







*“ The **O-Arm system** has brought surgery at the Royal Alex to the next level. On behalf of our surgical team, I want to thank **Full House Lottery ticket buyers** across Alberta for making this wonderful technology available for our patients. ”*

- Kathy VanVeen  
Patient Care Manager

◀ Left to right: Dr. Andrew Nataraj (Neurosurgeon), Dr. Frank Kortbeek (Orthopedic Surgeon), Kathy VanVeen (Patient Care Manager), Justin DesRoches (Medical Radiation Technologist) with the O-Arm Surgical Imaging System.

## Full House Lottery – Funding Innovative Healthcare

There is not a corner of the Royal Alexandra Hospital that hasn't been touched by Full House Lottery. Twenty years of funding from this popular Alberta lottery has resulted in significant facility improvements to the Lois Hole Hospital for Women, the CK Hui Heart Centre, the Orthopedic Surgery Centre, and the Eye Institute of Alberta.

The latest medical technology at the Royal Alex to be funded by Full House is the incredible O-Arm Surgical Imaging System. The O-Arm is designed for use in spine, orthopedic, and trauma-related surgeries. It provides surgeons with real-time, detailed imaging of a patient's anatomy with high quality 3D and 2D images. These live images make surgery easier, quicker and safer.



# \$24,657,649

Net proceeds to the Royal Alexandra Hospital Foundation from Full House Lottery (2005 - 2015)



## A Ground Breaking Program Yields Incredible Results

The Addiction Recovery and Community Health Team (ARCH) at the Royal Alexandra Hospital has been changing lives since it started seeing patients in 2014. Since then, people who are at greater health risk due to addiction, poverty, mental illness, and other factors have been helped down a better path in life. Instead of patients making dozens of visits to the Emergency Department for acute care in times of crisis, they are now receiving ongoing outpatient care to live better lives. Truly ground-breaking in scope and compassionate in nature, the ARCH program is making a real difference in treating some of Edmonton's most at-risk patients.

*“ I’ve dealt with **addiction** and **lived on the streets** myself, so I know firsthand what that life is like. The ARCH program is showing **amazing results**. We’re helping people who otherwise would be destined for much worse. ”*

– Rob Gurney,  
Peer Support Worker

What do  
**PATIENTS**  
think of the  
**ARCH**  
TEAM?

*“ They treated me like more than just a number. They treated me like I was a **member of their family**, a little brother or somebody they actually cared about. ARCH is the first organization I’ve ever dealt with that I’ve felt that kind of care and commitment from. ”*

*“ They look at it like we’re not here to tell you to quit doing drugs; we’re here to **save your life**. ”*

*“ I’ll go as far as saying I believe it **saved my life**. ‘Cause when I was in the hospital I was fully prepared to go out and do it again, try and **commit suicide** again. I saw no hope, I saw no future. I didn’t think anybody cared and I didn’t care. But ARCH came along and they kind of proved to me that **somebody did care** and showed an interest in me, had a vested interest in me getting better. **And it worked**. ”*

▶ ARCH Team members Jessica Muller (Education Coordinator) and Rob Gurney (Peer Support Worker) inside the ARCH Clinic.







*“ What an honour to be nominated as **Amazing at the Alex**. I see members of the Royal Alex team providing **exceptional care** every day. Seeing staff formally recognized through this program is **fun and rewarding**. ”*

- Carmela Zumbo, Unit Manager

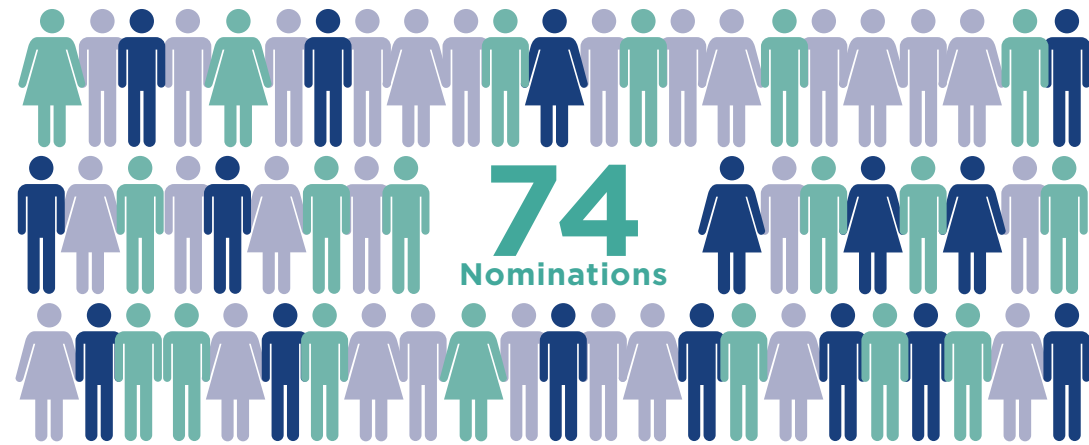
◀ Left to right: Amazing at the Alex recipients Carmela Zumbo (Unit Manager, Internal Medicine), Dr. Neeja Bakshi (Physician), Steve Ferguson (Supervisor, Emergency Department), Laura Lam (Registered Nurse, Catheter Lab / Cardiac Recovery), Kamran Joseph (Maintenance Worker), Layna Aschenmeier (Social Worker).

## Amazing at the Alex

People are inspired to give back to the Royal Alexandra Hospital for many different reasons. One of these reasons is because they have received great care and they wish to say thank you. Amazing at the Alex is a program that provides a platform for grateful patients or their family members to say “thank you” in a meaningful way. With a donation to the Royal Alexandra Hospital Foundation, people can nominate a health care professional or Royal Alex team member who went the extra mile. The nominee receives a special pin, official recognition, and the pride that comes with being Amazing at the Alex.

The Amazing at the Alex program donations provide funding for the Patient and Provider Experience Office at the Royal Alex. This funding has allowed for a centre of motivation and inspiration to be created, led by a team that is committed to fostering a culture of patient care that leads with empathy, understanding and communication.

Contributions to the Amazing at the Alex program help the Royal Alexandra Hospital strive — in new and innovative ways — to truly be the difference between care and caring for patients and their families. Thank you to everyone who has contributed thus far.



(March 2014 - August 2016)



## The Difference Between Care and Caring

In a world where enduring love has become merely an idea that we see on film, sometimes we are fortunate to see a story that reminds us that such a love still exists. A quote from the beautiful film *The Notebook* aptly tells us that “every great love starts with a great story” and the story of Angela and John Molella is just that, a great love story with its closing days spent at Edmonton’s Royal Alexandra Hospital.

After 73 years of marriage and a lifetime of memories, John and Angela Molella spent their final days, hand in hand, in the care of the staff at the Royal Alex.

Their incredible story inspired a video – *The Difference Between Care and Caring* – produced by the hospital and Royal Alexandra Hospital Foundation to share the

story of how a decision by some members of the Royal Alex staff made an incredible difference in the care one local family received at the hospital.

The video succeeded beyond our wildest dreams. Not only did it stir emotions for more than 500,000 online viewers, it attracted the attention of major media outlets and earned awards from the Advertising Club of Edmonton, the Alberta Film and Television Awards, and the DoGooder National Video Awards. More importantly, it served to inspire Royal Alex staff to continue to make the extra effort with patients and to take the time to demonstrate that there is a difference between care and caring.



▲ John and Angela Molella holding hands during the last moments of their lives.

“ We grew up **together**, and now we’re going to die **together.** ”

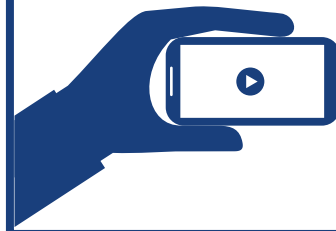
– Angela Molella

## BEHIND THE SCENES ON THE VIDEO SHOOT



To watch the video please visit the **ROYAL ALEXANDRA HOSPITAL FOUNDATION YOUTUBE** channel.

### THE DIFFERENCE BETWEEN CARE AND CARING : FILM STATS



Over  
**500,000**  
online views



Shared more than  
**8,000 TIMES**  
on various social media platforms





## President and Chair's Message

At a time in our province where fiscal restraint has become necessary and people are “crunching the numbers,” this year’s annual report to the community focuses on celebrating numbers. Our figures represent lives transformed: babies born, heart blockages cleared, addictions overcome, eyes saved, new hips and knees, and dozens more.

Thanks to generous community support, the Foundation continues to assist the Royal Alexandra Hospital to provide better healthcare by funding new medical technology, innovative patient programs, and exciting medical research. These marvelous medical advances — combined with compassionate patient care from the Royal Alexandra Hospital’s exceptional team — are taking the patient experience to a whole new level.

As we remark on the numbers, one thing remains clear: donor support is helping redefine patient care and the patient experience at the Royal Alexandra Hospital.

However, there is one number at the Royal Alex that needs to change: the four-bed units that continue to make up the bulk of patient care rooms in the main building at the Royal Alexandra Hospital.

The Royal Alex — a hospital that plays such a crucial role in our province — is one of the last remaining hospitals in Alberta to utilize four-bed patient care units. The impact upon patients and healthcare workers is becoming more apparent every year.

Our Foundation sees great potential to help shape the future of healthcare in Alberta by working with the Government of Alberta to invest in a new Royal Alex. And we know that the community support which continues to nurture the existing Royal Alex will likewise play a crucial role in the future of our hospital, a beloved cornerstone of healthcare for the people of Edmonton and northern Alberta.

Sincerely,

**Dan Manning**

*Chair, Royal Alexandra Hospital Foundation*

**Andrew Otway**

*President and CEO, Royal Alexandra Hospital Foundation*



## 2015 - 2016 BOARD OF DIRECTORS - ROYAL ALEXANDRA HOSPITAL FOUNDATION

The Royal Alexandra Hospital Foundation's Board of Directors are community leaders who are committed to delivering advice, direction, and counsel in all fundraising efforts. As advocates for the Royal Alexandra Hospital, these volunteers engage the community in meaningful philanthropy that will support the priority needs of the hospital, allow new research, and make advancements in patient care possible.

**Dan Manning**  
CHAIR

Sales Executive,  
CTV Edmonton



**John Day**  
PAST CHAIR

John Day Developments



**Olivia Butti**

Community Volunteer



**John Cameron**

President & CEO,  
Keller Construction Ltd.



**George Coon,**  
FCPA, FCMA, CFP

Regional Director,  
Northern Alberta First  
West Capital



**Kari Ericksen**

Owner,  
Weber Motors Ltd.



## BOARD OF DIRECTORS - ROYAL ALEXANDRA HOSPITAL FOUNDATION

### ROYAL ALEXANDRA HOSPITAL FOUNDATION STAFF

### ROYAL ALEXANDRA HOSPITAL REPRESENTATIVES

### PATRONS

**Melanie Nakatsui**

Community Volunteer



**Douglas Pratt**  
FCPA, FCMA, CFP

Assistant Vice President,  
Canadian Western Bank



**Kimberly Shulha**

Manager of Health Policy  
& Patient Access,  
Novartis Pharmaceuticals  
Canada Inc.



**David S.Tam**  
BSC Pharm, LLB

Partner,  
Parlee McLaws LLP



**Brian Tod QC**

Counsel,  
Miller Thomson LLP



**Liza J. Wold**

Partner,  
Bryan and Company LLP



**Iris Evans**

President,  
You First Inc.



**Dr. Garnet E. Cummings**  
FRCP, FACEP, MSc,  
BPe and EMDM

Executive Director,  
Brain Care Centre



**Elizabeth Hurley**

Partner,  
Davies Park  
Executive Search



**Jerry Kavanagh**  
CA, CPA (Illinois, USA)

Partner,  
PricewaterhouseCoopers



**Diane Kyle-  
Buchanan**

Yorkshire Equities Inc.



**Dr. Zaheer Lakhani**  
CM, FRCP

Clinical Professor,  
University of Alberta



**Andrew Otway**

President & CEO,  
Royal Alexandra  
Hospital Foundation



**Dr. Curtis Johnston**  
MD, FRCP(C)

Co-Facility Medical Director,  
Royal Alexandra Hospital;  
Associate Zone Medical  
Director, Royal Alexandra  
Hospital, Sturgeon  
Community Hospital



**Judith Hockney**

Senior Operating Officer  
Royal Alexandra Hospital



**Selikke Janes-Kelley**

Site Executive Director,  
Royal Alexandra Hospital



**William K. and  
Mary Jo Robbins**

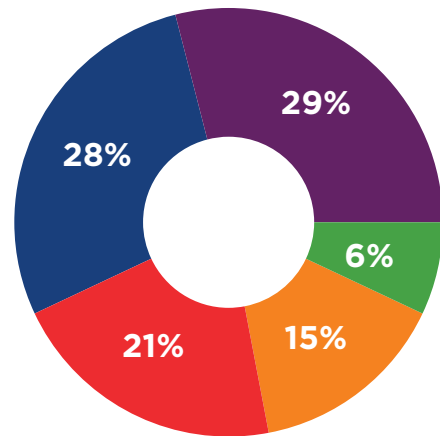


**Dale Sheard**



ADVANCING HEALTHCARE FOR ALL ALBERTANS

**\$ 5,091,188**



Royal Alexandra Hospital Foundation's Distribution of Funds to the Royal Alexandra Hospital 2015-2016

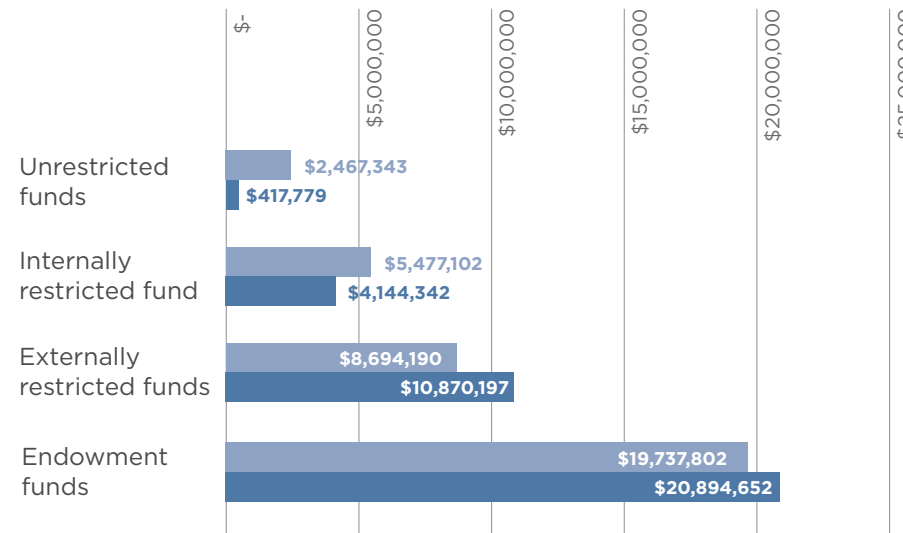
- Lois Hole Hospital for Women/Women & Children's Health Research Institute
- Inner City Health and Wellness
- Surgery
- Other Hospital Programs & Priorities
- Eye Institute of Alberta

FUND BALANCES AS OF MARCH 31, 2016

comparison with 2015

**\$36,326,970**

■ 2015 ■ 2016



STATEMENT OF FINANCIAL POSITION

Year end March 31, 2016 with comparative information for 2015

Extract from the 2015-2016 annual audited financial statements.

To view the full financial statements, audited by KPMG LLP, please visit [www.royalalex.org](http://www.royalalex.org)

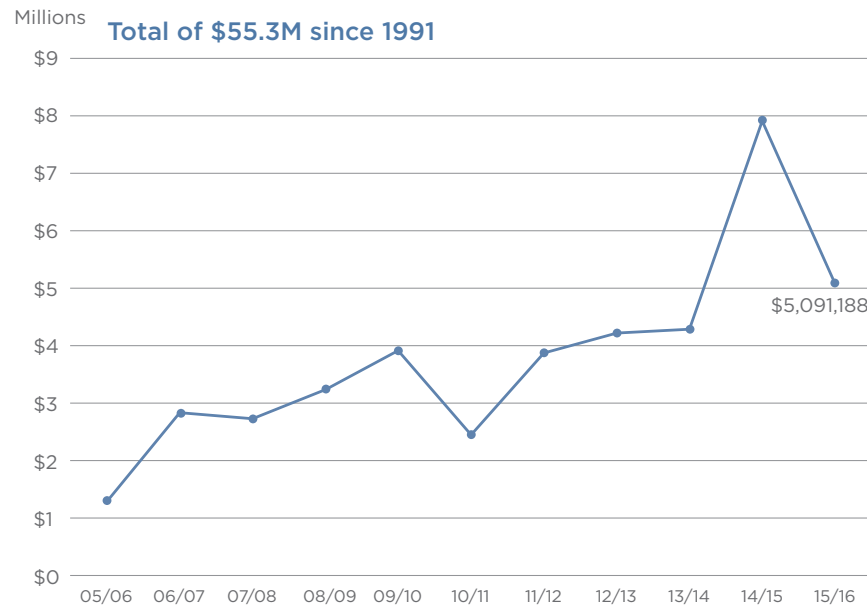
	March 31, 2016	March 31, 2015
<b>ASSETS</b>		
Current assets		
Cash	\$ 3,991,136	\$ 4,108,330
Restricted cash	2,153,551	2,850,965
Accounts receivable	75,227	97,810
Other assets	1,178,845	1,109,792
Prepaid expenses and deposits	36,940	71,201
	<b>7,435,699</b>	<b>8,238,098</b>
Capital assets		
Land, held for resale	245,518	287,874
Portfolio investments	14,500	14,500
	35,935,326	36,565,911
	<b>\$ 43,631,043</b>	<b>\$ 45,106,383</b>

LIABILITIES AND FUND BALANCES

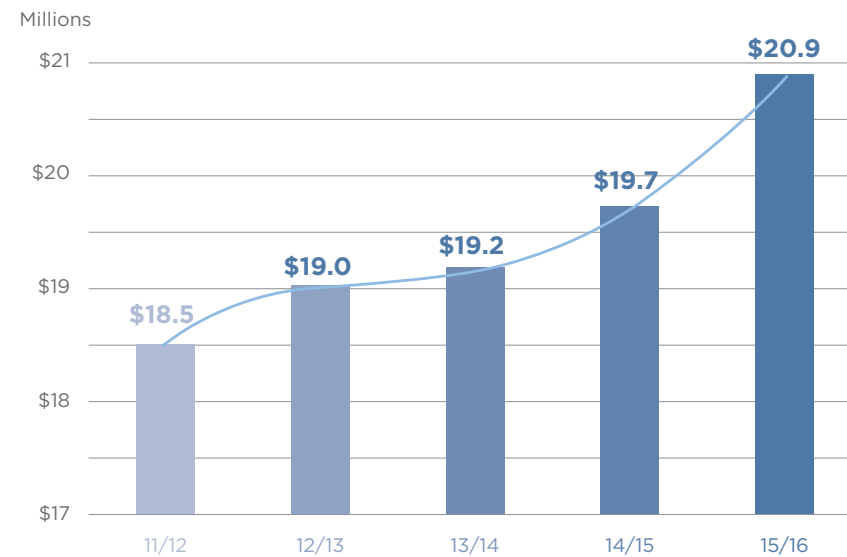
Current liabilities		
Accounts payable and accrued liabilities	\$ 2,676,922	\$ 1,277,638
Due to Alberta Health Services	831,823	2,500,000
Deferred revenue	3,795,328	4,952,308
	<b>7,304,073</b>	<b>8,729,946</b>
Fund balances		
Endowment funds	20,894,652	19,737,802
Externally restricted funds	10,870,197	8,694,190
Internally restricted fund	4,144,342	5,477,102
Unrestricted funds	417,779	2,467,343
	<b>36,326,970</b>	<b>36,376,437</b>
	<b>\$ 43,631,043</b>	<b>\$ 45,106,383</b>

TRANSFERS IN SUPPORT OF THE ROYAL ALEXANDRA HOSPITAL

Total of \$55.3M since 1991



ENDOWMENT FUND BALANCE 2011-2016



On behalf of the Board:

Chair, Board of Directors

Chair, Finance, Audit and Risk Management Committee



## STATEMENT OF OPERATIONS AND CHANGES IN FUND BALANCES

Year end March 31, 2016 with comparative information for 2015

Extract from the annual audited financial statement

	2016 Total	2015 Total
<b>REVENUE</b>		
Fundraising	\$ 4,591,656	\$ 3,731,064
Gaming	11,403,287	8,331,063
Investment income	(466,214)	3,608,489
	<b>\$ 15,528,729</b>	<b>\$ 15,670,616</b>
<b>EXPENDITURES</b>		
Fundraising	\$ 2,251,479	\$ 2,087,676
Gaming	7,550,401	5,936,957
Administrative	685,128	683,999
	<b>\$ 10,487,008</b>	<b>\$ 8,708,632</b>
Excess of revenue over expenditures before distributions to charitable organizations	\$ 5,041,721	\$ 6,961,984
Distributions in support of the Royal Alexandra Hospital	5,091,188	7,909,574
Excess (deficiency) of revenue over expenditures	<b>(49,467)</b>	<b>(947,590)</b>
<b>Fund balances, beginning of year</b>	<b>\$ 36,376,437</b>	<b>\$ 37,324,027</b>
<b>Fund balances, end of year</b>	<b>\$ 36,326,970</b>	<b>\$ 36,376,437</b>

## FUND BALANCES

Extract from the annual audited financial statements

	Year End Balance 2016	Year End Balance 2015
<b>CK HUI HEART CENTRE</b>		
Cardiology Innovation Endowment Fund	1,573,224	1,572,224
Cardiology Innovation Endowment Fund Interest	526,116	440,019
CK Hui Cardiology	1,213,732	1,148,153
Coronary Intensive Care Unit (CCU) Fund	6,593	6,548
The Hui Family Endowment for Cardiology Research and Innovation	1,041,774	1,034,975
The Hui Family Endowment for Cardiology Research and Innovation Interest	274,454	224,588
William K. Robbins Endowment for Research and Innovation in Cardiology	1,550,545	1,540,424
William K. Robbins Endowment for Research and Innovation in Cardiology Interest	211,010	211,212
Dr.Talibi Innovation Fund	287,339	283,339
<b>Total CK Hui Heart Centre Funds</b>	<b>\$ 6,684,787</b>	<b>\$ 6,461,482</b>
<b>GENERAL PURPOSE</b>		
Casino Interests	238	-
Chint Kaur Lali, Boota Singh Lali and Family Endowment Fund	500	-
Chint Kaur Lali, Boota Singh Lali and Family Endowment Fund Interest	27	-
Full House Lottery 2015/2016	(951,205)	(1,185,156)
General Fundraising Fund	297,310	100,879
Gift in Kind	11,856	11,856
Steve Ozipko Priority Equipment Fund	397,902	389,153
Priority Equipment	18,609	58,744
RAH Foundation Fund	4,144,342	5,477,102
RAH Foundation Fund Interest	-	2,211,947
Win Win 50/50 Staff Lottery	124,925	(33,391)
<b>Total General Purpose Funds</b>	<b>\$ 4,044,504</b>	<b>\$ 7,031,134</b>
<b>INNER CITY HEALTH &amp; WELLNESS</b>		
Inner City Health & Wellness Fund	(222,235)	(123,574)
<b>Total Inner City Health &amp; Wellness Fund</b>	<b>\$ (222,235)</b>	<b>\$ (123,574)</b>



	Year End Balance 2016	Year End Balance 2015
<b>LOIS HOLE HOSPITAL FOR WOMEN</b>		
Adam Burkholder Memorial	14,944	14,944
Edmonton Eskimo Women's Ovarian Cancer Research Endowment	356,608	293,473
Edmonton Eskimo Women's Ovarian Cancer Research Endowment Interest	63,475	47,392
Edmonton Chinese Community Fund	5,000	5,000
Cavarzan Chair in Mature Women's Health Research Endowment	3,084,353	3,084,353
Cavarzan Chair in Mature Women's Health Research Endowment Interest	411,317	516,449
Cecilia Johnstone Endowment for Research and Innovation in the Treatment of Cervical Cancer	371,844	366,844
Cecilia Johnstone Endowment for Research and Innovation in the Treatment of Cervical Cancer Interest	105,505	85,329
daVinci Robotic Surgery Campaign	(369,721)	(697,885)
Allard Hereditary Breast and Ovarian Cancer Clinic (HBOC)	525,623	398,513
Lois Hole Hospital for Women	1,135,639	982,681
Lois Hole Hospital for Women Advanced Minimally Invasive Surgery	258,168	-
Lois Hole Hospital for Women Bereavement Fund	86,342	73,620
Lois Hole Hospital for Women Endowment	2,683,797	2,250,000
Lois Hole Hospital for Women IVF Compassionate Care	41,162	39,462
Mary Jo Robbins Endowment for Research and Innovation in Women's Health	1,033,564	1,026,817
Mary Jo Robbins Endowment for Research and Innovation in Women's Health Interest	159,044	109,572
Ovarian Cancer Fund	-	1,195
Sawin & Baldwin Chair in Ovarian Cancer Research Endowment	1,495,615	1,485,853
Sawin & Baldwin Chair in Ovarian Cancer Research Endowment Interest	232,460	235,872
Dr. Zenon Shewciw Fund for Gynecological Oncology Endowment	137,492	136,595
Dr. Zenon Shewciw Fund for Gynecological Oncology Endowment Interest	24,358	17,777
Terry Horwitz Fund	47,013	43,900
Dr. Terry Traff Endowment for Reproductive Endocrinology/In Vitro Fertilization	17,750	17,150
Dr. Terry Traff Endowment for Reproductive Endocrinology/In Vitro Fertilization Interest	4,960	4,010
<b>Total Lois Hole Hospital for Women Funds</b>	<b>\$ 11,926,312</b>	<b>\$ 10,538,916</b>

	Year End Balance 2016	Year End Balance 2015
<b>MEN'S HEALTH</b>		
Men's Health External Restricted	2,043,719	2,011,842
Prostate Health Research and Innovation Endowment Fund	1,055,987	1,049,095
Prostate Health Research and Innovation Endowment Fund Interest	305,727	255,182
Urology	52,347	52,122
<b>Total Men's Health Funds</b>	<b>\$ 3,457,780</b>	<b>\$ 3,368,241</b>
<b>NEONATAL INTENSIVE CARE UNIT (NICU)</b>		
Neonatal Education Fund	7,335	7,335
Neonatal Intensive Care Unit (NICU) Donations Fund	191,084	168,361
Princess Madison Trust	19,794	18,767
Thatcher Neonatal Intensive Care Unit (NICU) Fund	-	512
RAH Neonatal Intensive Care Unit (NICU) Compassionate Support Fund	2,296	3,296
<b>Total Neonatal Intensive Care Unit (NICU) Funds</b>	<b>\$ 220,509</b>	<b>\$ 198,271</b>
<b>OPHTHALMOLOGY</b>		
Eye Institute of Alberta	416,920	193,686
Lions Eye Research Endowment Fund	342,327	342,327
Lions Eye Research Endowment Fund Interest	75,494	56,751
George and Dorothy O'Neill Eye Research Endowment Fund	170,791	170,791
George and Dorothy O'Neill Eye Research Endowment Fund Interest	38,999	79,648
Ophthalmology Research Endowment Fund	3,174,202	3,148,505
Ophthalmology Research Endowment Fund Interest	484,019	547,504
Ophthalmology Equipment	100,434	94,909
Ophthalmic Surgical Skills Centre	229,126	(92,507)
<b>Total Ophthalmology Funds</b>	<b>\$ 5,032,312</b>	<b>\$ 4,541,614</b>
<b>ORTHOPEDECS</b>		
Orthopedics	298,713	252,990
Orthopedics Research and Innovation Endowment Fund	1,074,924	1,074,924
Orthopedics Research and Innovation Endowment Fund Interest	319,829	260,977
<b>Total Orthopedics Funds</b>	<b>\$ 1,693,466</b>	<b>\$ 1,588,891</b>



	Year End Balance <b>2016</b>	Year End Balance <b>2015</b>
<b>RESEARCH AND EDUCATION</b>		
Critical Care Fund - Education	22,694	20,764
Grant Funds	107,343	187,500
Mary Anne Komaran Symposium Endowment	250,000	200,000
Mary Anne Komaran Symposium Endowment Interest	27,147	15,285
Mary Anne Komaran Professional Development	136,519	81,162
Harold and Florence Mosley Nursing Education and Research Fund	35,066	35,999
Research and Innovation	48,071	48,071
Respiratory Education Fund	4,688	4,688
Speaking of Health	53,789	47,702
<b>Total Research and Education Funds</b>	<b>\$ 685,317</b>	<b>\$ 641,171</b>
<b>SPECIAL PURPOSE</b>		
Aboriginal Welcome Baby Fund	471	471
Acute Care for the Elderly Fund	1,818	1,818
Adult Mental Health	399	249
Dr. C.A. Berner Endowment Fund for Patient Care Excellence	27,509	27,409
Dr. C.A. Berner Endowment Fund for Patient Care Excellence Interest	14,644	13,141
Al Blumer Memorial Fund	4,823	4,572
Cable Family Compassionate Support Endowment Fund IV	656,114	620,381
Cable Family Compassionate Support Endowment Fund IV Interest	85,627	71,380
Cancer Research and Innovation Fund	1,950	1,900
Children's Mental Health	(33,256)	(36,359)
Departments of Surgery & Anesthesiology Fund	13,809	-
Department of Medicine General Fund	5,635	4,355
Emergency Department Fund	21,736	40,027
Catherine Folinsbee Fund for Pediatric Care Endowment	10,732	10,661
Catherine Folinsbee Fund for Pediatric Care Endowment Interest	4,248	3,734
Agnes Moffatt Fraser Patient Comfort Fund	81,488	77,259
Graduates' Fund of RAH School of Nursing Alumnae	41,197	44,830
Holmes Endowment Fund	30,000	30,000
Holmes Endowment Fund Interest	5,749	4,106
Chris Hruday Endowed Fund In Memory of William Hruday	50,000	50,000

	Year End Balance <b>2016</b>	Year End Balance <b>2015</b>
Chris Hruday Endowed Fund In Memory of William Hruday Interest	9,581	6,844
Intensive Care Unit (ICU) Fund	43,812	21,832
Mary Anne Komaran Compassionate Care Fund Endowment	450,000	100,000
Mary Anne Komaran Compassionate Care Fund Endowment Interest	10,539	7,642
Mary Anne Komaran Social Work Grants Endowment	250,000	100,000
Mary Anne Komaran Social Work Grants Endowment Interest	15,855	7,642
Neurosurgery/Research/Thoracics	1,025	875
Dr. Larry Olhauser Fund	500	500
Palliative Care Fund	32,357	27,977
Patient & Provider Experience Fund	26,369	-
Peter & Mary Prokopiw Endowment Fund	5,000	5,000
Peter & Mary Prokopiw Endowment Fund Interest	958	684
Rheumatology Outpatient Clinic Fund	5,000	5,000
Robbins Learning Centre	874,816	829,406
Dr. Elizabeth Schwab Fund	10,490	8,959
Sigurborg Gundrun Gail Pjetursson Adult Psychiatry	6,199	6,199
Surgery Donation Fund	27,903	22,675
David White Memorial Fund	9,121	9,120
<b>Total Special Purpose Funds</b>	<b>\$ 2,804,218</b>	<b>\$ 2,130,290</b>
<b>TOTAL FUNDS</b>	<b>\$ 36,326,970</b>	<b>\$ 36,376,437</b>

## ROYAL ALEXANDRA HOSPITAL FOUNDATION INVESTMENT INCOME/LOSS

Realized income	\$ 2,577,471
Unrealized loss	\$ (3,023,685)
<b>Net Investment loss</b>	<b>\$ (446,214)</b>

Due to domestic and foreign market volatility during the 2015/16 fiscal year, the fair value of the Foundation investment portfolio was negatively impacted. Like many Non-Profit Organizations, the Foundation recorded a net investment loss during the 2015/16 fiscal year of \$446,214.

This net investment loss was comprised of an unrealized loss of \$3,023,685, which is a result of market volatility. This unrealized loss was partially offset by realized income of \$2,577,471. This net investment loss equates to a 1.2 % loss on the net investment assets held by the Foundation. While any unrealized investment loss is of concern, it is the expectation of the Foundation that the portfolio value will recover in the upcoming fiscal year.

- Andrew Otway, President & CEO, Royal Alexandra Hospital Foundation





# YOUR SUPPORT, YOUR IMPACT

REPORT TO THE COMMUNITY 2015 - 2016